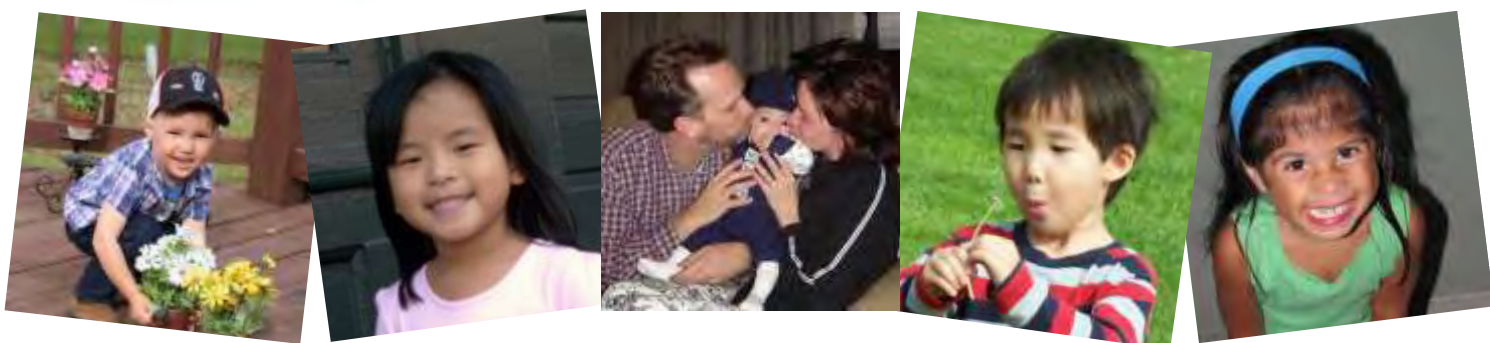




ALL BLESSINGS INTERNATIONAL  
Finding Families For God's Children



# Guide to Services





## ALL BLESSINGS INTERNATIONAL

Finding Families For God's Children

### AGENCY PHONE HOURS OF OPERATION

Monday - Thursday: 9:00 AM through 4:00 PM

Friday: 9:00 AM through 12 noon

- Client appointments are available in the evenings and on weekends.
- Clients are provided with emergency contact numbers as appropriate.

In general, clients have the home and cell numbers of certain agency staff. Please exhibit respect and discretion when utilizing these numbers. Agency staff have family and need time away from work. If a question can wait until the next business day, please wait until this time and call the office.

\*This document only addresses the rights of clients with regard to domestic agency staff and does not extend to CIS, the foreign country staff or the government of any country. ABI operates on an equal opportunity basis.

## Staff

Lucy Armistead, MA, LPCC ([lucy@allblessings.org](mailto:lucy@allblessings.org))— Executive Director

Rhonda Gore, MAMFC ([rhonda@allblessings.org](mailto:rhonda@allblessings.org))— Social Services Director/ Home Study Coordinator

Jennifer Baldwin, BA ([jennifer@allblessings.org](mailto:jennifer@allblessings.org))— Executive Assistant

Emily Mathews, LCSW ([emily@allblessings.org](mailto:emily@allblessings.org))— MO Office Director & Domestic/Taiwan Coordinator

Amy Baird Larkin, BSW ([amy@allblessings.org](mailto:amy@allblessings.org))— Post Adoption/Placement Coordinator

Lynne Payne ([lynne@allblessings.org](mailto:lynne@allblessings.org))— KY Office Assistant

Dale Armistead ([billing@allblessings.org](mailto:billing@allblessings.org))— Bookkeeper

Anji Edge ([anji@allblessings.org](mailto:anji@allblessings.org))— Dossier and Post Placement Assistant

Stephanie Williams, MA, LSW ([stephanie@allblessings.org](mailto:stephanie@allblessings.org))— TN Office Director / Haiti Coordinator

### Adoption Caseworkers

Lydia Fusco, MSW, LSW; Meredith Young, BSW

Karly Beaumont, MSW; Angela Keane, MSW;

Natalie Seitz, MSW; Shauna Whidden, BA

Amy Blount, LMSW; Olivia Kluiters, MSW



ALL BLESSINGS INTERNATIONAL

Finding Families For God's Children

***Dear Prospective Adoptive Parent,***

Thank you for your recent inquiry into our adoption program and services. All Blessings International Inc., located in Owensboro, Kentucky, Franklin, Tennessee, Jeffersonville, Indiana and Ozark, Missouri is a state-licensed, Hague Accredited non-profit child-placing and humanitarian aid organization. In addition, we are proud members of the Joint Council on International Children's Services. We are committed to serving children and families!

**About ABI, Inc.** - The purpose of this agency is to help children find homes by offering child-placing services/consultation for parents pursuing adoption internationally and domestically; providing non-directive counseling to expectant families in their exploration of adoption, and completing thorough Home Study evaluations for potential Kentucky, Indiana, Tennessee, and Missouri adoptive families. We educate prospective parents on options available regarding adoption, present professional training to prepare families for the many issues involved with adopting and parenting a child, and complete post placement supervision after placement has occurred. We also provide humanitarian aid and financial support to children for which adoption is not currently possible and offer opportunities for mission trips abroad.

**Our Mission** - All Blessings International, Inc. strongly believes in the innate worth of every individual child and seeks to assist God's children throughout the world by thoroughly preparing potential adoptive parents and recruiting families for adoption. It is this agency's firm belief that every child has a right to grow up in a family where he or she is loved, nurtured, protected, and appreciated for his or her unique individuality, and we work diligently to lovingly unite children with their forever family and to create, fund and maintain overseas humanitarian projects that serve at risk children.

**Our Many Services** - All Blessings International, Inc. offers ADOPTION SERVICES for many countries as detailed in this guidebook and provides HOME STUDIES for Kentucky, Indiana, Missouri, and Tennessee families in their pursuit of DOMESTIC placement or INTERNATIONAL adoption from many countries. For families outside the states that we provide home study services we offer our child-placing services, we can refer you to an approved Home Study provider. Our agency has an international partnership with an agency that places children from Korea and closely works with Kentucky, Indiana, Missouri, and Tennessee families to adopt from Korea. ABI offers to families pre and post-adoptive guidance, education, and support while providing clients assistance with adoption and cultural awareness. We will collaborate with state social services, court officials, and adoption agencies in the United States and the world. Many families applying for international adoption are very pleased to know that we can manage dossier legalization with both domestic and international mailings. We also serve families seeking DOMESTIC ADOPTIVE PLACEMENTS, provide COUNSELING for EXPECTANT FAMILIES, and offer INDEPENDENT HOME INVESTIGATIONS, POST-PLACEMENT SUPERVISION, and ASSISTANCE WITH ADOPTION FINALIZATION. All Blessings International Inc. will work around your schedule, as daytime, evening or weekend appointments are available! We pride ourselves on our knowledge of adoption as well as our expedient service.

Enclosed is an agency application, and an explanation of the fees and services through our agency. This information will enable us to decide if your family meets the minimum requirements necessary to work with our agency to adopt a child.

If you would like to contact families that have utilized our services, do not hesitate to contact our offices and request reference information. ABI, Inc. understands the very confusing and often overwhelming nature of adoption, especially for families new to the process. We've attempted to write this guide to services and process in an understandable format, but please know we're here to assist you in any way possible as you encounter this exciting journey!

There are quite literally millions of children who wait for the love of a family. Could a child be waiting for you?

Many blessings and very sincerely,

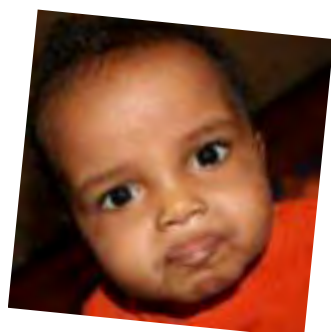
**A. Lucy Armistead, MA, LPCC**

Founder and Executive Director

# ABI Guide to Services

## Table of Contents

ABI Mission, Purpose and Background .....	5
Client and ABI Bill of Rights.....	6
Client Grievance & US Department of State Complaint Policies .....	7
Taiwan Adoption Program .....	8
Burkina Faso Program .....	9
Hai Adoption Program .....	10
ABI Domestic Program .....	11
Korea Network Adoption Program .....	12
Networking Adoption Program.....	13
Home Study Process .....	14-15
Independent Investigation.....	15
Post Adoption / Post Placement Supervision .....	15
International Adoption Training Program - Parent Education.....	16
Financing Option .....	17
Adoption Finance Coaching System.....	18
Adoption Fees and Explanations.....	19-20
Frequently Asked Questions .....	21
The Adoption Process .....	22
Criteria for Agency Acceptance .....	23-24
Current Poverty Guidelines.....	25-27
Hague Disclosures and Licenses.....	28-29
Humanitarian Aid .....	30
Notes .....	31



# Mission Statement

All Blessings Interna onal (ABI), is a Chris an, not for pro t organiza on passionately dedicated to building, strengthening and enriching families by serving at risk children, as well as individuals, groups and families experiencing crisis or otherwise seeking to make posi ve changes in their lives. We believe that all children have a right to grow up in a family where they are protected, loved, nurtured and appreciated as unique individuals.

In keeping with this belief, the agency is commi ed to working with birthmothers here in the United States who are considering an adoption plan for their child(ren) by providing non-directi e and educati nal counseling, as well as services to complete their adoptio plans.

All Blessings Interna onal is dedicated to assis ng children overseas in nding permanent families. We may provide services to families worldwide to assist them in their adoption eff rts and local services for families in the states of Kentucky, Indiana, Missouri, and Tennessee.

## Purpose

The purpose of this agency is to assist children by preparing adoptiv families, recruiti g adoptiv families and assis ng with the comple on of adoptions worldwide, as well to provide aid to instit ional zed children and to children at risk of becoming instit ional zed. This agency helps prospec ve adopti e parents and expectant parents research their many op ons regarding adoptio and presents professional training to prepare adoptiv families for the myriad of issues involved.

## Background History

All Blessings Interna onal (ini ally Kentucky Adop on Services) was founded by Lucy Armistead in 2002. Lucy had operated an adoption program at another Kentucky agency for three years, but felt a call to off r more services to families. She decided, at 26 years of age, to trust God and begin this agency. Over the last (almost!) 17 years, through many challenges, changes, and growth, ABI remains a Christ-centered agency and our prac ces rst serve Him. ABI has been blessed tremendously - more than we could have ever imagined. Having started from Lucy's basement, ABI has now grown to licensure in four states, a sta of highly qualifie professionals, excellent child placement programs, the Interna onal Adoption raining Program, and our Hague accredita on status. Lucy is a published author, award recipient and trusted expert that is called upon by news organiza ons, other professionals, legislators, as well as the court to advise on adoption ma ers. ABI sta have presented at local, regional, na onal and interna onal conferences. The agency has been awarded the Congressional Angel in Adoption Award. ABI has served over 1000 children and there are more projects and opportuni es for service.

# Client and ABI Bill of Rights

## **ABI CLIENTS HAVE THE FOLLOWING RIGHTS:**

1. To receive services in a timely manner within the realm of international and domestic adoption.
2. To have your phone calls returned and questions answered to the best of ABI ability.
3. To be treated with dignity and respect.
4. To assess the child referred for adoptive placement within the guidelines of the agency, USCIS and the foreign country. (Please note, this is not intended to imply that several children will be shown as possible referrals at one time.)
5. To be provided with information and instructions enabling you to complete the paperwork processes necessary to meet your specific client needs.
6. To be provided with information regarding the services to be provided for the fees paid.
7. To have the right to access the grievance process.
8. To equitable treatment that is free of favoritism or discrimination.
9. To be guaranteed confidentiality.
10. To review case documents, with the exception of case notes, as applicable to the specific family.

## **ABI HAS THE FOLLOWING RIGHTS:**

1. To have agency phone calls returned in a timely fashion.
2. To be treated with dignity and respect.
3. To have cooperation from the clients throughout the adoption process and following the adoption process for a minimum of three years or throughout the required time for post-adoption services, whichever is longer.
4. To require a personal in-office meeting with the Executive Director or management staff at any time, but particularly in reference to a referral.
5. To be provided with truthful and complete information from clients.
6. In accordance with Kentucky, Indiana, Missouri, and Tennessee state licensing statutes, ABI retains the right to refuse applicants who do not meet its criteria or to terminate relationships.
7. To close adoption programs for any reason, terminate any adoption agreement and/or services to the family solely at ABI discretion with no fees refunded.
8. To have our professional role and qualifications honored, as well as the limitations respected. We are not travel agents, doctors, etc.
9. To require further counseling, medical evaluation or other assessments with a licensed mental health or medical professional to determine the suitability of the family to pursue or continue to pursue adoption with ABI.
10. To require and receive cooperation on requests made by ABI in reference to any adoption pursuit.
11. To operate in the best interests of children at all times.

\*\*ABI does not consider it acceptable to turn down possible referrals that meet the criteria outlined by the prospective parents without documented and justified reasons.



## ABI COMPLAINT POLICY AND RESOLUTION PROCESS SUMMARY

**Client satisfaction is of the utmost importance to ABI. The following is a SUMMARY of ABI's Complaint Policy & Procedures:** ABI maintains a written complaint policy & procedure that is available in full via email or hard copy for review by any interested party upon request. The **complete** policy & procedures are also on ABI's website, distributed with all Business Agreements and must be signed and returned to ABI. Contact information for the Hague Complaint Registry is below. All decisions by ABI shall be made with the best interests of the child as being of the utmost importance. To the best of its ability, the agency will provide honest, responsible, and efficient inter-country adoptions according to regulations put forth by the Hague Convention, INA, IAA, UAA and the Federal government. In the event that a person feels that there has been non-compliance with the Hague Convention, INA, IAA, UAA, agency, or governmental procedures, they may file a written complaint or grievance and expect a written response from the agency within 30-days of receipt of the complaint. The agency does not take any action to discourage a client or prospective client from, or retaliate against a client or prospective client for: making a complaint; expressing a grievance; providing information in writing or interviews to an accrediting entity on the agency's performance; or questioning the conduct of or expressing an opinion about the performance of the agency.

**Informal Grievances are those instances in which a client is requesting clarification or concerns, not seeking to initiate the formal complaint process.** The Agency encourages open and honest discussion among its personnel and clients. As services are provided, it is expected that clients may experience confusion or personality differences with staff. Clients are encouraged to directly contact the Executive Director in any such situation & ABI staff are directed to refer circumstances of concern to the Executive Director as soon as aware. The Executive Director shall immediately seek to resolve any lack of satisfaction. Unless the client seeks to formally lodge a complaint with the agency through the complaint procedures, situations that are resolved through intervention, attention, hand holding, discussion, etc. shall not be recorded as formal complaints for the purposes of ABI's complaint policy & procedures. **Formal complaints are defined as specific correspondence submitted in writing to ABI, following the prescribed procedures (fully detailed in the complete policy & procedure statement), with the goal or intent of lodging a complaint.** Formal complaints must be signed, dated, sent via certified delivery & include the following: Complainant's Name, address, contact information, relationship with the agency & description of the activity or service upon which the complaint is based. The Executive Director shall review complaints or grievances expeditiously and shall respond in writing within 30-days of receipt of the original complaint. Expedited review and response within 10 days of receipt will occur for complaints of a time sensitive nature or those involving allegations of fraud. Should the complainant be dissatisfied with the response from the Executive Director, he/she should follow the ABI described procedures for directing the complaint to the Board of Directors to appeal the determination of the Executive Director. Any complaint involving the Board of Directors shall be responded to by the Board in writing within 10 days of the meeting of the Board, but no later than within 30 days from the receipt of the appeal.

The agency maintains a written record of each complaint received regarding allegations of non-compliance with the Convention, the IAA, and the regulations implementing the IAA and the steps taken to investigate and respond to the complaint and makes this record available to the accrediting entity or the Secretary upon request. The agency provides to the accrediting entity and the Secretary, on a semi-annual basis, a summary of all complaints received concerning compliance with the Convention, the IAA, the UAA and/or the regulations implementing the IAA and UAA during the past six months, which includes the number of complaints received and how each complaint was resolved and an assessment of any discernible patterns in complaints received against the agency, along with information on what systemic changes if any the agency has made or plans to make in response to such patterns.

Any dispute that has not been resolved as specified above shall be settled by arbitration with the then current commercial arbitration rules of the American Arbitration Association (AAA) by a sole arbitrator. The place of the arbitration shall be the ABI offices in Owensboro, Kentucky. The decision rendered by the arbitrator shall be final and judgment may be entered upon the award of any court having jurisdiction.

#### EXECUTIVE DIRECTOR CONTACT INFORMATION:

A. Lucy Armistead, MA, LPCC  
All Blessings International, Inc.  
3808 South Griffith Ave.  
Owensboro, KY 42301  
(270) 684-2598 (Office) / Email: [lucy@allblessings.org](mailto:lucy@allblessings.org)

Please note that the accrediting entity responsible for reviewing Hague complaint registry submissions is tasked with verifying that the complainant has already attempted to seek resolution through the agency's internal complaint procedures prior to consideration.

#### U.S. DEPARTMENT OF STATE COMPLAINT REGISTRY

The U.S. Department of State is committed to upholding the ethical standards, professional practices, and principles set forth in the Hague Convention on Intercountry Adoption, the Intercountry Adoption Act of 2000 (IAA), and the Federal implementing regulations. The Hague Convention on Intercountry Adoptions Complaint Registry will forward your complaint to the appropriate Accrediting Entity for action, and the Department will monitor complaints about accredited agencies or approved persons after receiving information from you.

To submit a complaint, simply go to <http://adoptionusca.state.gov/HCRWeb/WelcomeForm.aspx> and click the Confirm button when finished. If you wish, you may also print out a form and fax it to the U.S. Central Authority at 202-736-9080 or mail it and any supporting documents to:

Address: U.S. Central Authority  
U.S. Department of State  
Bureau of Consular Affairs  
Office of Children's Issues, Adoption Unit  
SA 17, Floor 09  
Washington, DC 20522-1709

You can also request that these forms be sent to you by calling the Department of State at (888) 407-4747.



# Taiwan Adoption Program

All Blessings International, Inc. is proud to partner with Cathwel Adoption Service of Taiwan. The Taiwan adoption program through Cathwel is a great option for families with resources available to parent children with special needs. These needs include developmental delays, medical needs, or children and sibling groups who are simply older. Children ages 3 and up are available for adoption.

**Children Available:** Children with special needs or medical issues will be available for adoption, as well as older children (typically school age) and sibling groups. Special needs include developmental disabilities, cerebral palsy, hydrocephalus, ADHD, down syndrome, hearing loss, epilepsy, and limb difference. Children reside in foster care or a high quality orphanage. (Please feel free to request our current list of waiting children.)

**General Adoptive Parent Requirements:** Families meeting the following criteria may be suitable to adopt from our Taiwan program:

- Married, heterosexual couples between ages 25 and 55
- Must be 20 years older than the adopted child
- Couples must have been married for 5 years (it is possible to be accepted with 2-4 years of marriage, if the couple can prove they were in a long-term, committed relationship prior to marriage)
- No more than one divorce per adoptive parent
- No more than 3 children already residing in the home
- Must be healthy or only have minor health concerns
- Minimum of high school diploma or GED
- No alcohol/drug abuse or criminal violations within the past ten years

**Cost of Adoption from Taiwan**

**Total Estimated Expenses:**  
**\$17,090 to \$32,340**

*This estimate does not include travel costs.*

**Adoption Process:** The first step in adopting from Taiwan is to complete ABI's adoption application. The second step is to have a Home study conducted by an agency licensed in your state of residence. ABI will be able to assist you with your home study process if you reside in Missouri, Kentucky, Indiana, or Tennessee. If not, ABI can recommend a Hague-Accredited home study provider in your area. The next step is to file form I-600A and supporting documents with USCIS in order to obtain immigration approval.

**Cathwel Packet-** During the home study process, ABI will also be working with your family to complete a packet for Cathwel. This will include photos of your family and a birth parent letter. On occasion, birth parents in Taiwan are part of the matching process. Your family will be chosen based on non-identifying information that will be included in your packet. If a birth parent is not part of the matching process, Cathwel will work to make the best possible match for your family.

**Matching-** Your family will receive all available photos, videos, social and medical history of the child.

**Dossier-** The next step is the Dossier. It is a compilation of documents that require various seals at different levels of government. ABI, Inc. will provide adopting families with exact directions to prepare their dossier. Don't be overwhelmed - we'll help you with this and manage dossier! Once your dossier is ready to submit, your documents will be reviewed and prepared to enter Taiwan's legal system when you have accepted a referral.

**Court-** Adoptive parents may be asked to attend the court hearing for their prospective adoptive child at the discretion of the judge assigned to your child's case. The court trip is approximately 3-5 days in Taiwan. After court occurs, two court decrees will be issued making you and your spouse the child's legal parents. After the final court decree has been issued, you will work with ABI to learn your travel dates and bringing your child home.

**Travel-** Couples typically travel 2-3 weeks after the final court decree has been issued. The final trip to Taiwan is approximately 4-7 days.

**Post-Placement:** After returning home with your child you will be required to follow up with ABI with five (5) post-placement reports. 1, 6, 12, 18, 24 and 36 months agency reports and an additional self-reports 4-18 years of age. All reports must include at least one photo of the child with the parent(s) and two of the child. Eight (8) photos included with each report.



# Burkina Faso Adoption Program



All Blessings International, Inc. is one of the few adoption agencies in the United States to be accredited by the Ministry of Social Action to facilitate adoptions from the country of Burkina Faso. It is difficult to give a time frame, but it is estimated to be anywhere from 18-24 months after your dossier is submitted. Families adopting from Burkina Faso need to be flexible and can expect to make one trip to Burkina. ABI works with Sheltering Wings to assist with adoption processing. As a Hague country, the government of Burkina Faso controls adoption processes.

**Children Available:** There is a waiting child photo list. Children available for adoption include children with special needs and healthy older children.

**General Adoptive Parent Requirements:** To be eligible for adoption from Burkina Faso, adoptive parents must be a married heterosexual couple. Couples adopting from Burkina must be married for at least 5 years. The Burkinabe government prefer an adopted child to be the youngest in the family and no child in the home with similar age. The maximum number of children in the home is four. Not including the adopted child.

**Adoption Process**— The adoption process from Burkina Faso can appear overwhelming initially. However, it is a step-by-step process and ABI will guide you. The first step in adopting from Burkina Faso is to have a **Home study** conducted by a Hague Accredited agency licensed in your state of residence. The second step, that can be done concurrently, is to file your Immigration and Naturalization Paperwork: the **I-800A**. The next step is the **Dossier**. It is a compilation of documents that require various seals at different levels of government. Once your dossier is ready to submit, your documents will be reviewed and your dossier will be sent to Burkina.

**Referral.** The wait time for a referral from Burkina Faso will vary based on age, gender, and special needs of the child the family is requesting. Referral information includes as much detail as we receive from our overseas counterparts.

**Travel.** Preferred if both parents travel. Prepare for approximately two weeks in order to complete the adoption in country, although families must be flexible.

**Post-Adoption.** Reports following a child's placement for adoption are required to be completed by a licensed adoption agency (typically the same one that conducted the home study) at 1, 6, and 12 months following placement. Four to eight color pictures are to accompany each report. These are sent by ABI to Burkina Faso. After these reports the adoptive family is required to submit a written report once a year up to the child's 18<sup>th</sup> birthday with four to eight color pictures.

## Cost of an Burkinabe Adoption

**Total Estimated Expenses:  
\$28,200 - \$31,000**

*This estimate does not include travel costs,  
which are quite significant.*

# Haiti Adoption Program



**PLEASE BE AWARE** At this time, we are not accepting applications for our Haiti Adoption Program, as we are currently at our agency's maximum number enrollees (for the Haiti Program). This limit was established to ensure "In Process" clients can receive services from us that meet our agency's high-standards. We do not use a "waiting list" to alert potential clients when new applications are being accepted. Please check our website regularly for updates.

All Blessings International, Inc., also known as Kentucky Adoption Services, is a Hague accredited, non-profit agency licensed in Kentucky and Missouri, as well as approved by Haitian social services (IBESR) as an Adoption Provider. We are a Christian agency – This does not infer exclusion. It simply means we will serve our clients with honesty, compassion and transparency seeking at all times to glorify God and be an example of Christian love. **We serve families of all faiths.** ABI has been working in Haiti for many years and currently supports numerous humanitarian efforts in Haiti.

PLEASE NOTE: Haiti has modified adoption procedures greatly and is likely to continue changes.

**Children Available:** Children of all ages who were abandoned, orphaned or relinquished by surviving birth parents are available for adoption. Siblings, toddlers, and older children are in need. Most children are medically healthy. IBESR determines the eligibility of adoptable children.

### **General Adoptive Parent Requirements:**

- Opposite sex married couples with at least one parent age 30 and neither older than age 50
- Five years of marriage OR five years of cohabitation

**OR**

- Singles ages 35—50

Please note that Haiti will not permit same sex couples to adopt. Parents may never have been convicted of any crime. Applicants can have any number of biological or adopted children provided that they can provide for the new adopted child(ren).

**Adoption Process**– The adoption process from Haiti can appear overwhelming initially. However, it is a step-by-step process and ABI will guide you. The first step in adopting from Haiti is to have a **Home Study** conducted by an agency licensed in your state of residence. The second step is to file your Immigration paperwork: the **I-800A**. The next step is the **Dossier**. It is a compilation of documents that require various seals at different levels of government. Once your dossier is ready to submit, your documents will be reviewed and prepared to enter submit to the Haitian Central Authority for approval as an adoptive family. Haiti operates under a dossier quota. Your program coordinator will tell you what month you will be submitted.

### Cost of A Haitian Adoption

**Total Estimated Expenses:**

**\$35,100 to \$38,900**

*This estimate does not include travel costs.*

**Referral.** The current wait time for a child from Haiti varies is highly variable. General referrals are made by a committee overseen by the Central Authority. Our agency is permitted to work directly with the orphanages to suggest referrals for children who are siblings, are age seven or older, or who have pre-identified special needs. The process of adoption takes on average 12 months after the socialization period in country. Referral information includes as much detail as we receive from our overseas counterparts, including photographs with medical and social history.

**Travel.** All parents are required to travel for a 15 day socialization period. ABI will assist with travel arrangements in country. Additional visits may be allowed.

**Post-Adoption .** Reports following a child's placement for adoption are required to be completed by a licensed adoption agency at 6, 12, 24 months, annually for 7 years or until the child is 18 years of age. The first three reports must be completed by a social worker with a Hague approved agency. These are sent by ABI to Haiti. Eight(8) photos included with each report.



# Domestic Adoption Program



All Blessings International, Inc. offers adoption child-placing services for infants born within the United States and voluntarily relinquished for adoption by his or her birthparents. Because birthparents are given the unique opportunity to select a loving family for their child, it is necessary that adoptive parents prepare a family profile. It is wise to spend some time creating a nice family profile. We educate families about the benefits of open adoption for all members of the adoption triad and strongly encourage families to consider open adoption. We also network with several reputable agencies that place American infants.

**General Adoptive Parent Requirements** – To be eligible to adopt an infant born within the United States, parents should be at least 21 years, and no more than 45 years of age. Both married couples and single applicants are able to adopt in this program, and there is no limit for number of children residing in the home (however, it seems less likely for birthparents to select older adoptive parents, or adoptive families that already have a child or children). General adoptive parent requirements are very broad, so please contact ABI, Inc. for further information.

**The Home Study & Required Documents**– At this time, we only accept Kentucky, Indiana, Missouri and Tennessee families utilizing the Home Study services of ABI. For more information on the Home Study process please refer to the section of this guide entitled “The Home Study Process”. Until a child is made available for adoption and offered to your family for placement, the family Home Study is kept on file in our office. The Home Study must be updated every twelve months, per state regulations. You will be provided a list of the required documents prior to the start of your Home Study. Renewal for supporting documents is also required every twelve months, and a greatly reduced fee for an updated Home Study is charged.

**The Waiting Period** – Adoptive parents are chosen by birth families, thus there is no guarantee of when or if an adoptive family will be selected. Some families might be selected two weeks after their activation, and others might wait several years and never be chosen – thus, a “timeline guarantee” does not exist. We advise that adoptive applicants submit their profile to at least one other placing agency to increase their exposure to birth parents; however, this requirement can cause difficulty for families seeking a Caucasian child, as many agencies accepting out-of-state families for Caucasian placement require non-refundable fees which are charged whether or not that agency actually places a child with that family.

**Referral** – When a child is born & the biological parent(s) maintain their adoption plan, the child is placed with the prospective adoptive parents in a foster care placement or in temporary cradle care. Court is scheduled to terminate the parental rights of the biological parent(s), at which time the child is formally referred for adoption. Once a child is referred to a family, they have physical custody of the child, while this agency holds the actual legal guardianship until the adoption is completed. (Please note, different legal procedures exist for biological families in MO, IN, TN, and KY desiring to relinquish their children.)

[Cost of a Domestic Adoption](#)

**The Domestic Adoption Child Placement Fee through ABI is \$29,000**

Families will also incur expenses for legal fees, living expenses, and foster care as applicable.  
Each domestic adoption situation is unique.

**Post Placement Visits** – ABI, Inc. will conduct post placement evaluations at 1, 3, 6 months following your child’s arrival, following the regulations of your child’s state of birth and placing agency, as applicable. A report describing the child’s health and adjustment is then written and submitted to the necessary professionals. Eight(8) photos included with each report.

**Additional Reports** – ABI, Inc. requires monthly written reports, along with pictures, be filed with this office until finalization is completed. In addition, families will make an agreement for continuing updates mutually agreeable with the biological family. All families must understand that these reports and pictures will be shared with birth families as they are submitted – we will take no responsibility for identifying information that is submitted on these forms and will make no attempt to omit such information. For families accepting a semi-open adoption arrangement, it is the adoptive family’s responsibility to ensure that they do not disclose identifying information in these reports and pictures.

# Korea Network Adoption Program



All Blessings International, Inc., proudly partners with very experienced and long established child placing agencies, including Family and Children's Agency and Dillon Southwest. ABI, Inc. works closely with **Kentucky, Missouri, Indiana** and **Tennessee** families providing home study, referral and immigration assistance, as well as close communication and advocacy with the other adoption entity on behalf of your family. While the Korean program has seen changes in recent years, it is well-established and reliable. It's possible to complete an adoption in 18 months.

**Children Available:** Both infant girls and boys are available for adoption from Korea, however, boys are more prevalent. Applicants cannot request the gender of their child, and must be open to both genders. Children are between 6-12 months old at the time of referral, as all Korean children are not available for international adoption until after they are 5 months old. Applicants must be open to a child prenatally exposed to a minimal amount of alcohol or cigarettes

**General Adoptive Parent Requirements:** To be eligible to adopt from Korea, parents should be between 25-44 years of age and should be married for at least three years. Age waivers are available to those of Korean heritage, adoptees of any heritage or those who have previously adopted from Korea. Previous divorces are accepted, but more than one divorce per spouse is evaluated on a case-by-case basis. Parents can have no more than 4 children already living in the home, and the child to be adopted must be the youngest by two years. (Families can apply when their youngest child is 18 months old.) You must have no major health issues and cannot be prescribed an anti-anxiety or anti-depressant medications. Must have a body mass index of less than 30. Families must be financially stable. Please contact the Korea Network Director Stephanie Williams, [stephanie@allblessings.org](mailto:stephanie@allblessings.org), to discuss the requirements in depth and to assist you in applying to the program.

**Adoption Process**— Adoption from South Korea has been in existence since 1955. Therefore, adoption from Korea is a consistent and reliable program. While there have been changes to the process with the adoption of the Hague Convention on International Adoption and the political atmosphere towards adoption in Korea, the process remains one of the most reliable adoption programs today. The first step is to contact Stephanie Williams and discuss the program for a full understanding of what to expect. Then, if you reside in **Kentucky, Missouri, Indiana** or **Tennessee**, ABI will complete your home study. At this time, you will submit an application to one of our partnering agencies as well. At the completion of your home study, we will assist you in submitting your I-600A, which is your Immigration and Naturalization Paperwork, and your home study will be sent to Korea to await a child referral.

## Cost of a Korean Adoption

**Total Estimated Expenses:  
\$30,000-\$32,000**

This range includes the anticipated total for each fee

**Referral.** The current wait time for a referral after a family has submitted their home study to Korea is between 2-3 months. Referral information is very detailed. It includes photos of the child, a social history on the birth parents, medicals and developmental report on the child, and information on any medications, alcohol or nicotine consumed by the birth mother during her pregnancy. Updated medicals, developmental reports and photos will be provided after acceptance of a referral.

**Travel.** Currently, there are two one week trips. The first trip will take place between 6-9 months after referral acceptance. Both parents must travel to meet their child and appear in court during the first trip. The second trip only requires one parent to travel to obtain the child's visa and escort him or her home.

**Post-Adoption.** ABI will conduct post placement evaluations in the months following your child's arrival. Reports describing the child's health and adjustment are then written in the 1, 2, and 3 month intervals once the child is home and submitted to Korea, and then again in months 6, 9, and 12 by your ABI case worker, as well as a post adoption medical, and 5 pictures of the child and family per report. You will finalize your child's adoption in Korea, and will receive your child's Certificate of Citizenship in the first few months of your child's arrival home. However, to obtain an American birth certificate, you must re-adopt your child in your county court. Your local case worker will be able to assist you with information on how to complete a re-adoption

# Networking Adoption Program and General Notes

All Blessings International Inc. networks with many very reputable and long-established child-placing agencies to help place children throughout the world into loving Kentucky, Indiana and Missouri homes; for this program, applicants would employ the Home Study services of All Blessings International, Inc. while utilizing the child-placing services of another agency. As we have much experience working within the policies and professional relations with other entities, you may contact this agency if you would like our guidance in choosing a child-placing agency.

All Blessings International can complete a home study for adoption from any country open to American parents. As All Blessings International is Hague-accredited, we are able to complete the home study assessment for both Hague and non-Hague programs. Many sending countries and placement agencies will only accept the home study if completed by a Hague-accredited agency (such as for adoption from China), and our agency is able to satisfy this requirement.

You are welcome to contact this office and fully explore all available options for expanding your family through adoption.

**Please note...**The placing agency chosen is responsible for locating a child available for adoption, using the guidelines set forth by your adoptive Home Study. For international adoption, the placement agency is in contact with the country's representative(s) and is directly responsible for facilitation of the placement. For domestic adoptions outside the state of Kentucky, Indiana, Missouri, and Tennessee the responsibility for location of the child and facilitation of the placement lies with the out-of-state agency.

Nothing is certain about the adoption process. Families need to be flexible when dealing with placing agencies, especially with international adoptions. Countries are subject to political upheaval, policy changes, etc. Expect delays, requests for additional paperwork, or a birthmother's change of heart.

Prospective adoptive parents are responsible for a number of requirements in the adoption process. It is essential that all paperwork be completed in an accurate and timely fashion. This is especially true for USCIS paperwork. If in doubt, please ask for assistance, as an error in paperwork can delay placement. It is also imperative that applicants be honest with their caseworker during the Home Study process. Dishonesty that is discovered later will only create doubt in your caseworker's mind regarding personal character and/or motivation to adopt, which could directly affect the worker's ability to make a positive recommendation for placement.

Finally, it is the adoptive family's responsibility to prepare for life with the adopted child. Issues such as separation and loss, cultural differences, adjustment issues, and questions about identity are all unique to the adopted child. Parents should prepare for such issues to make the adoption a successful and happy occasion for all involved. Preparation is essential when adopting older children. There are numerous resources available in our office. The adoption worker will work closely with families during the Home Study process to increase their education and understanding regarding adoption issues.

For international adoptions, ABI requires completion of the International Adoption Training Series, with optional addition specific to older children. Families adopting domestically will receive training as part of their home study process and may be required to complete foster care training and certification, as well.

# The ABI Home Study Process

Anytime a family pursues an adoption, with the exception of certain family adoptions, a Home Study is required by law. The Home Study agency must be licensed in the state in which the prospective adoptive parents reside. All Blessings International, Inc. is a licensed, non-profit child-placing agency, providing Home Study services to Kentucky, Indiana, Missouri, and Tennessee families. A Home Study consists of a series of appointments with an adoption professional. Your case worker will come to know your family well and will be able to provide assistance throughout the adoption process by offering education on your various options for adoption and help you to decide which program will work best for your family. In addition, your adoption caseworker will assess your family's appropriateness for adoption and counsel you on various issues unique to adoption. This agency will help each family explore their strengths, resources, and limitations to ensure that an adoptive placement is in both the child's and the family's best interest. Although the Home Study process can seem intimidating, it is a valuable experience and enables families to work closely with a trained professional who will provide encouragement, preparation, assistance and support throughout the exciting months to follow. We approach the home study process with a positive attitude, and encourage our adoptive families to do so, as well! The adoption agency is your partner and not merely an obstacle to surmount. We love our families and seek to assist with a positive and blessed adoption experience.

The application included in this packet of information, will enable us to decide if your family meets the minimum requirements necessary for working with our agency to adopt a child. This is the very first step to working with All Blessings International, Inc. for any adoption service. A non-refundable \$50 processing fee is due with this application.

After the application is approved you will receive another packet of documents that will aid in the writing of a Home Study and preparing your adoption worker for issues specific to your family. Your family will be assigned to an Adoption Case Specialist. We have Case Specialists throughout the state, and attempt to match families with staff located near their home in order to limit travel and offer families a local professional contact.

Approximately four Home Study interviews will be conducted with your Case Specialist, although more interviews may be requested. These can often occur in two points of contact, but more visits may be necessary. Two visits must occur in the family's home. For a two-parent family, both need to be present for an initial interview, as it will provide each member with an opportunity to ask questions and to be educated on adoption issues in general, as well as issues specific to various countries; this meeting usually lasts about two+ hours. The next two interviews are with each partner individually, and can occur during the home visit. We do our best to be accessible and convenient; therefore we can usually offer appointments during the day, in the evening, or on weekends. The individual interviews are typically one and a half hours each. The last visit is called a "home visit", and obviously must occur in your home. This visit usually takes about one hour and all persons residing in your home must be present. It is often possible to schedule more than one interview in a day, as families are usually very anxious to have the Home Study visits behind them - just ask the office for details!

If your worker recommends your family for an adoptive placement, a written Home Study is completed. The study is sent to the Bureau of Citizenship and Immigration Services - National Benefits Center, (for families pursuing an international adoption), you (if it is necessary), and your chosen agency (for families not utilizing the child-placing services of All Blessings International). Please note that we, as an agency, can only recommend your family for an adoptive placement. It will be up to USCIS, the country and the placing agency to approve your family for adoption. With many countries, it is necessary for adoptive families to compile various documents to be sent to the country, and this agency can assist with this process.

\*Acceptance of your application and participation in the Home Study process does not guarantee that you will be recommended by our agency for placement of a child. If, during the course of the Home Study, we feel we cannot positively recommend your family for placement, we will inform you as soon as possible. If this were to occur, we would explore with you, other available options. It is possible that an extended period of time could be required and a positive recommendation could be made at a later date. Fees for services provided to the point of such notification are non-refundable.

\*It is possible, although rare, that a family's home study approval may be revoked after the issuance of a positive home study. This could occur based on changes to the family composition, criminal charges, mental health concerns or other similar significant issues that would impact a child placed in the home.

**The Waiting Period** - Depending on a variety of factors, a family may wait for a referral on a child as little as a few months or several years. Waiting is hard for adoptive parents, but our agency will remain in contact with you. In Kentucky, the Home Study must be updated every twelve months for domestic adoption and eighteen months for an international adoption, according to both state and federal requirements. In Missouri, home studies for both domestic and international must be updated every 12 months. Other states have varying requirements for home study updates. Renewal of supporting documents (physicals, references, criminal checks, etc.) is also necessary at the time of update, if necessary. A greatly reduced fee is charged for completing an updated Home Study. Please note, USCIS requires a reapplication either fifteen or eighteen months depending on whether adoption from a Hague or non-Hague country is pursued.

**Referral of a Child** - Your placing agency (for families not utilizing the child-placing services of ABI, Inc.) will either contact our agency or you directly with information on a specific child. The amount of available medical and social information on the child varies from agency to agency and country to country. Your acceptance of the child will begin the process of legally placing the child with your family. For international adoption, Visa clearance and other paperwork must be obtained and USCIS clearance secured before the child is placed with your family. Time frame from referral to placement can be as little as two months or up to several years.

**Post-Adoption** - Once a child has been placed in your home, a minimum of three (although some agencies and countries require MANY more) Post Adoption / Post-Placement Visits are required. At least one visit should occur in your home, and both parents should be present for the in-home visit. A report of each visit is written and forwarded to the placing agency and/or placing country. Time frame for post placement visits varies between countries and agencies.

**Finalization and Court Report** - Depending on how an adoption was processed in a foreign country, re-adoption may be required here in the United States. This office will thoroughly explain this process during the initial interview, as it varies between countries and can be confusing. Once a petition for adoption is received, our agency prepares the required court report. It is the family's responsibility to obtain proper legal assistance in petitioning for the legal adoption of the child, although we can usually refer a good attorney in your area. After we have received a copy of the Final Judgment of Adoption and all post placement obligations have been met, our file is then closed.

## Independent Home Investigation

An independent placement occurs when the birth parents and non-related adoptive parents choose to pursue an adoptive placement without the introduction and services of an adoption agency. For such an independent placement to occur, Kentucky law requires an Independent Home Investigation be conducted and submitted to the Kentucky Cabinet for Families and Children or the Kentucky Interstate Compact Placement Commission (ICPC) office. The Independent Home Investigation report includes in-depth information about the adoptive parents, birthparents, and adoptive child's autobiographical information and motivation towards adoption. All Blessings International, Inc. is qualified to complete this requirement quickly while offering accommodating scheduling. ABI will also be able to provide assistance with the post adoption report and filing the necessary court report after the state's approval. Please contact ABI for further information. If you are not a resident of Kentucky but reside in Indiana, Missouri, or Tennessee, please let our office know and you can speak to the home study coordinator in your state to discuss the process.

## Post Adoption / Post Placement Supervision

ABI requires mandatory post-adoption/post-placement supervision. When ABI acts as the Primary Provider or as a Network Agency Provider, adoptive parents sign contracts outlining a minimum of three post-placements and often more. For cases in which ABI serves as the Home Study only provider, adoptive parents are requested to comply with the ABI requirement of a post-placement within six weeks of child's placement, as well as with the additional requirements imposed by the Foreign Country and/or the Primary Provider. Please see ABI guidelines for the general timing requirements of the post-placement supervision. The timing and number of post-adoption/post-placement requirements vary depending upon the country of adoption.

# International Adoption Training Program

[www.adoptiontrainingprogram.com](http://www.adoptiontrainingprogram.com)

The Hague Treaty on Intercountry Adoption requires that families pursuing Hague adoptions complete a minimum of 10 hours of pre-adoption education on specific topics. To meet this requirement, families pursuing international adoption through our agency will need to obtain education through International Adoption Training Program.

The Adoptive Family Edition includes: Four disk, 10 segment series (plus two supplements), Workbook, Online quiz access, and 12 Hour Certificate of completion. Of particular value are the interviews with adoption professionals, more than 100 Adoptive Family Perspectives and over 25 Adoptee Perspectives, where their feelings and experiences with adoption have been graciously shared and incorporated throughout the program.

The viewer is prompted to pause the video and discuss questions posed with a spouse or support person. After the videos, discussion, and article reading have been completed they will take an online quiz and earn the Certificate of Completion.

The International Adoption Training Program DVD series includes the following topics:

Segment 1: Beginning Your Adoption

Segment 2: Appropriate Expectations for a Smooth Transition

Segment 3: TBRI and Additional Attachment Information

Segment 4: Health, Medical Issues, and Nutrition

Segment 5: Sensory Needs, Occupational Therapy, and Therapeutic Massage

Segment 6: Transracial and Transcultural Adoption

Segment 7: Additional Adoption Information

Segment 8: Older Child Adoption

Segment 9: The Hague Treaty on Intercountry Adoption and the Universal Accreditation Act

Segment 10: Special Needs Adoption

Supplement A: Family Adoption

Supplement B: Single Parent Adoption professionals and/or adoption advocates have participated in interviews whereby they share their knowledge and personal experience relevant to the adoption field. A special "thank you" to the following (in order of segment appearance):

Debra Jones, Director of Parenting Adoptees Can Trust (PACT)

Dr. Melissa Goldstein, Carnegie Hill Pediatrics

Mishelle Rudzinski, SLP, SPOON Foundation

Christos and Emily Himonidis, adoptive parents

Sarah Melanson, OTR, Occupational Therapist

Summer Wilson, Massage Therapist and Adoptive Parent

Thomas Foerster, BSW, Adult Adoptee and Adoption Specialist for the state of Missouri

Nancy Fox, Executive Director of Americans for International Aid and Adoption

Annie Desmond, Informed Adoption Advocate

Diana Bramble, MSW, MBA, Associate Director of Madison Adoption Associates

Martha Osborne, founder of rainbowkids.com

Emily Mathews, MSW, LCSW, MO Office Director and Domestic Coordinator for All Blessings International, Inc.

Stephanie Rice, Adoptive Mother

Irene Steffas, Immigration Attorney and Hague Approved Person

Visit [www.adoptiontrainingprogram.com](http://www.adoptiontrainingprogram.com) for more information.



# Financing Options

Many prospective adoptive parents express anxiety (and sometimes anger) regarding the fees involved in adopting a child. We often hear "Why does adoption have to be so expensive?" or "Giving a child a loving home shouldn't cost anything!" Families are surprised to hear that most adoption agencies agree! However, adoption agencies see first-hand the expenses involved in international humanitarian visits, phone calls, legal fees, mailing, agency accreditation, insurance, program marketing, employee education and expenses, (plus a million other costs involved with running a business!) AND on the internal end, country travel expenses and running an orphanage by providing food, clothing, shelter, medicine and care to the countless children left behind! Please think for a moment how much it would cost to provide a child with daily, round-the-clock babysitting services... especially in the case of international adoption when a baby is placed under several months or years of care, many fees incurred when compared to months of 24-hour babysitting are quite low. ABI, Inc. faces daily, the reality that adoption is very expensive. We have worked very hard and quite successfully to provide families with high-quality services while keeping our fees as low as possible. While adoption can most certainly be costly, there are many resources and creative fundraising ideas available to help families with adoption fees. Adoptive families need not be wealthy, as there are many options available to help defray adoption expenses. Families motivated and committed to financing their adoptions are usually very successful with their fundraising endeavors.

**Federal Tax Credit:** Adoptive Parent(s) may claim a significant tax credit per child for qualifying adoption expenses. This is not a tax deduction, but a DOLLAR FOR DOLLAR tax credit. Please visit the IRS website or call 1-800-829-3676 to request the appropriate. IRS publication ABI, Inc. recommends that adoptive families seek professional advice from a legal or tax professional. The tax credit has been over \$13,000 in the past.

**State Tax Credit or Benefit :** many states have funds available for non-recurring costs incurred when adopting a child. Some states also offer a tax credit that is applied in addition to the federal tax credit - ask your tax advisor.

**Employer Benefit :** Roughly a quarter of the nation's employers offer some form of adoption benefits to their employees. Federal and state employees are generally allowed up to \$3,000 per adoption. Ask your employer about this benefit.

**Adoption Loans and Grants:** Some families apply for a home equity loan or refinance their mortgage. In addition, many banks and other lending programs offer adoption loans at very low interest rates. One ABI, Inc. family found that her credit card offered a loan rate that was lower than at her local bank. It might also be possible to borrow from a 401 K or Life Insurance Policy - however, we are aware that financial stress can be harmful to family functioning and encourage you to only borrow responsibly. There are also many foundations offering grants toward adoption expenses.

**Travel Idea:** Some airlines offer reduced fees for adoption and it may be possible to obtain frequent flyer miles from family members and friends to make travel to your child's country of origin much less expensive.

**Family Gifts:** It might be possible to borrow or accept a financial gift from a family member - parents, grandparents, and aunts or uncles are often very eager to help their loved ones attain their dream of expanding their family through adoption.

**Other Creative Fundraising Ideas:** One creative client hosted a Pampered Chef-sponsored Bunco party for friends and family, by charging a fee per player this individual took in over \$2,000 for one night of fun and fellowship! Another client took her grandmother's famous recipe for homemade bread, explained the adoption fundraising effort, and raised nearly \$1,000 in Christmas meal orders! Below are some other ideas you can use to raise money for your adoption:

- \*Have a benefit
- \*Host an Arts & Crafts Show
- \*Take an extra job
- \* Sell Avon/Mary Kay/Tupperware etc.
- \*Organize a car wash, bake sale, or yard sale
- \* Ask for financial assistance from family, friends, school or church.

Your possibilities are only limited by your imagination - there are many fundraising avenues open to families who truly desire to adopt. If there is a child waiting for you, please don't let finances stop you from pursuing your adoption dream!

# Adoption Finance Coaching System

*You've got "money questions," and we have the answers!*

The #1 barrier to a child having a loving and permanent family, is money. The adoption experience can be expensive - at **All Blessings International**, we are committed to helping answer all of your money questions through the innovative service, **The Adoption Finance Coaching System**.

Our team of adoption finance coaches will help you create a comprehensive financial action plan!

We know financial hardship can deter the best of families...**but don't give up!** Our team at ABI, along with our experienced adoption finance coaches are here to help you. We believe this unique service is vital in keeping families financially stable throughout the adoption process.

We don't want our families to be concerned about how to create a financial plan—with the Adoption Finance Coaching Services, **you don't have to go through this alone!**

## All Blessings clients receive these benefits:

- Unlimited access to all on-demand instructional videos as many times as you would like. Includes access to the templates for downloading and printing to use with the system.
- Access to special webinar opportunities with the Coach.
- Monthly webinars reviewing the materials and answering your questions.
- "Ask the Coach" service - email the Coach a question to assist you in your fundraising issues.
- GotchaGi Registry.com wish list, profile, journal and guest book. An exciting tool that allows your friends and family to give you cash gifts for your adoption for you to use for your adoption expenses.

Lower your anxiety by creating a comprehensive plan for your adoption

***The Adoption Finance and Coaching System will help you reach your financial goals and bring your family together forever!***

## Meet the Coach:

**Kelly Ellison, CEO/ Founder and adoptive parent**, brings over 25 years of fund development experience to the adoption community. She has a passion for helping families raise money for their adoptions. From this passion she created the **Adoption Finance Coaching System** and GotchaGi Registry.com. Families that use the program consisting of Tools to Finance Your Adoption, Grant Writing, Special Events and more, typically raise between \$5,000 and \$15,000 for their adoptions. Kelly is the host of Your Adoption Coach radio show a weekly show educating and inspiring others about adoption featured on Adoption.net. Kelly is the host of Your Adoption Coach radio show, a weekly show educating and inspiring others about adoption featured on adoption.net. She travels the country speaking and training families and agencies on best practices for fundraising for your adoption.



For more information please contact our office! Email [contact@allblessings.org](mailto:contact@allblessings.org)

# Fees and Explanations

**Application Fees:** A non-refundable application fee must accompany the application when returning to ABI. The application must be updated at the time of each new service and will expire within 12 months if the client chooses to not pursue adoption services. The application fee is waived when families use subsequent ABI services. **Please note, families using ABI strictly for home study services do not need to pay for the program services when sending in the application. https://allblessings.org/abiprogramcomparison/**

**ABI Agency Fee:** Upon submission of the Agency Agreement a portion of the agency fee is due. The remaining agency fees are due at various times as outlined specific to each country.

**Country Fee:** ABI does not set the country fee. It is decided upon by the facilitating organization in each country. The fee includes background investigation and identification of a child, social services, accepting legal responsibility for the child, with government and agency authorities, legal fees, routine child care, routine medical expenses and in certain countries, passport. With most countries a portion of this fee must accompany your dossier when it is sent overseas.

**Home Study Fee:** ABI provides Kentucky, Indiana, Missouri, and Tennessee families with comprehensive studies and written Home Study reports necessary for adoption. The Home Study must be completed by an ABI social worker or a cooperating agency approved by ABI. The Home Study must be accepted by ABI; therefore, it is wise to check with us for a referral to a quality out of state agency that has experience with international adoption home studies. The Home Study fee is due at or before your first Home Study visit when ABI completes the Home Study. Home Studies completed by cooperating agencies are subject to their fees and will be paid directly to that provider. ABI does not charge an additional Home Study review fee. ABI does charge when a Home Study addendum is necessary due to significant changes in the family or family's adoption preferences. This fee is between \$50-\$150 depending upon if a new visit to the family's home is necessary and the depth of the changes required. PLEASE NOTE: Home Studies for Kentucky and Tennessee residents expire after 18 months for international and 12 months for domestic. At this time an Update is needed. This is different than a second or more Home Study as the family does not require the same extensive training and interviews. This fee is reduced. Families utilizing ABI to complete additional Home Studies after having previously been an ABI client will note significant reduction in the Home Study fees.

**Dossier Related Fees:** The Dossier is a compilation of various documents required by overseas governments to represent your family when seeking that country's approval to adopt. The fees include those involved with document collection, notarization, state authentication/apostilling, foreign country authentication and translation, postage, courier fees and overnight fees. Many families are pleased to know that ABI offers non-ABI placement clients an optional Document Legalization Service to save families from the stress and time involved in sending documents to various legal entities to be certified, authenticated, etc. In addition, families are required to pay for any Courier Expenses, charges from the governmental entities and additional UPS costs should they be incurred.

**Post-Adoption / Post-Placement Fee:** This fee is for services after child placement and return home. Post-placement requirements vary by country; however, it is ABI policy that one post-placement occur within six weeks of arriving home and a minimum of two reports be completed. ABI will distribute post placement reports and pictures as necessary. These reports must be completed by either ABI or a cooperating agency. All cooperating agency fees are subject to their fee schedule and are paid directly to that provider\*. Compliance with post-placements requirements is essential for continued goodwill among countries offering international adoption as an option for American families. Court reports may be required for adoptions and are billed at the time of service. A court report will not be submitted to the judge without a prior post adoption report being completed. *\*Some programs require that the post adoption fee is pre-paid prior to child placement to assure that All Blessings International is able to stay in compliance with the international country requirements.*

**Fee Reductions:** ABI strives to provide excellent service at affordable fees. Fee reductions can only be offered for children with special needs, older children or large sibling groups and according to demonstrated family need. Should you be interested in adopting a child that meets this criteria please contact ABI to discuss your particular circumstance.

# Fees and Explanations Continued....

**Fee Refunds:** Application fees are non-refundable. The initial Agency Fees are non-refundable. The remainder of the Agency Fee is non-refundable. The Home Study Fee is paid at the Initial Interview. Following the Initial Interview, 75% of a family's fee will be refunded should the family decide to withdraw from the Home Study Process. After the Individual Interviews, 25% of the fee may be refunded and following the home visits no portion of the Home Study fees will be refunded. Post-adoption post-placements fees are non-refundable. There are extenuating circumstances where ABI may consider partial refund of unused fees, if applicable.

***All fees are subject to change and any fees not paid to ABI are not under the control or discretion of ABI. All fees paid to ABI are considered fees for services rendered and are not refundable. On occasion ABI may be able to offer a slight fee reduction based on a child's special needs and a family's financial situation.***

***ABI contributes a portion of the fees collected for Home Studies, Agency Placement and International fee to humanitarian aid. ABI donates to humanitarian aid in developing countries.***

**Indiana, Missouri and Tennessee Home Studies may be subject to a different Home Study Fee Schedule. Please speak to a each office director for more information.**

Note – Surcharges will be added to the fee including mileage for each home visit and each post-placement. The mileage below is roundtrip from the city of residence of the assigned caseworker. We do our best to schedule families together to decrease this cost, and mileage is not often needed; however, this is not always possible.

Surcharges: 0-200 miles: \$15; 201-350 miles: \$30; over 350 miles: \$50

Mileage is billed at .40 per mile, although the IRS rate is .575 per mile.

1. All accounts that are 30 days past due will be subject to 1½ % interest.
2. If for any reason your account has to go to a collection agency and/or a attorney for collections you will be responsible for any and all fees accrued by the collections agency and/or attorney.
3. In compliance with 501c3 non-profit standards, ABI does not accept individual donations on behalf of a family's adoption pursuit. (If there is a rare exception, any **donation** offered on behalf of an adoptive family shall be deposited into ABI's general account or humanitarian aid account, if an adoption process is formally stopped by or for the specified family.)
4. All credit card payments will have a 4% fee added to process.
5. There will be a \$30 return check fee for all checks returned.

# Frequently Asked Questions

1. **Where do I start?** Call us first! We can help you decide which program best meets your preferences. We will also help you with the paperwork for Citizenship and Immigration Services, if you choose an international adoption.
2. **What is "The Hague" and what does it mean?** The United States is part of an important treaty on intercountry adoption called the Hague Convention on Protection of Children and Co-operation in Respect of Intercountry Adoption (Hague Adoption Convention). The treaty governs adoption between the United States and approximately 80+ other nations. The Hague Adoption Convention entered into force for the United States on April 1, 2008. The Department of State is the U.S. Central Authority for the Convention and oversees compliance with the Convention and the Intercountry Adoption Act of 2000 (IAA). In this role, the Department of State also serves as U.S. liaison with other adoption Central Authorities around the world. The Hague Adoption Convention protects children and their families against the risks of unregulated adoption abroad, and ensures that intercountry adoptions are in the best interests of children. The Convention also serves to prevent the abduction, sale of, or traffic in children.
3. **What is Hague accreditation and Why should I choose an accredited agency?** Two entities in the US applied to be accrediting bodies for US adoption agencies seeking Hague Accreditation. They are the State of Colorado, which can only accredit Colorado licensed agencies and Council on Accreditation (COA) which can accredit nationwide. ABI is accredited by COA. By utilizing a Hague Accredited agency you can be assured they meet the requirements of Hague accreditation, which involves financial stability, policies for transition should an agency close, policies for transparency and numerous other safeguards. In addition, even non-Hague countries are starting to see the value in Hague Accreditation and may require that services be provided by a Hague Accredited agency.
4. **What children are available for adoption?** It is possible to adopt children as newborns, as well as older children and everything in between. Sibling groups and children with special needs are also available for international and domestic adoption.
5. **Do I have to be married?** No, many single people adopt each year. There are, however, varying requirements and restrictions from country to country.
6. **Do I have to own my own home?** Adoptive families do not have to own their own homes - renting is fine.
7. **What if my spouse is not a US citizen?** USCIS regulations permit international adoptions if only one spouse is a citizen.
8. **How long does a total adoption take from beginning to end?** This depends upon the country chosen. International adoptions can vary from program to program. Some of the speed of an adoption rests in how quickly a family completes their paperwork. Please refer to the country information sections for more information on a country's specific time frame, but please remember estimates may change as current processing changes.
9. **How long will it take me to receive USCIS approval?** USCIS approval can be obtained within 4 weeks to 6 months from the time a family is fingerprinted and has received the family's Home Study, whichever is last. Processing times vary.
10. **Where can I obtain the Immigration Form, I-600A or I-800A?** This form may be downloaded free of charge from [www.uscis.gov](http://www.uscis.gov). They may also be obtained by calling 1-800-870-FORM.
11. **What is the purpose of "Immigration Clearance"?** Immigration clearance or approval is necessary for a family to bring an internationally adopted child into the United States. Immigration Clearance ensures that a child adopted abroad is legally eligible for adoption and offers an assurance to foreign governments that the adoptive family will provide a stable home.
12. **Is travel required for an international adoption?** This varies from country to country. Some countries will allow an "escort" to bring the child into the United States. However, most countries do currently require travel by at least one parent.

# The Adoption Process

The described process is to serve as a general guide for adopting through ABI. The details will vary according to your specific adoption program. However, this guide will help familiarize you with the adoption process and the general requirements.

1. Complete the ABI Application and return it to ABI. PLEASE NOTE: All potential international applicants must also be approved overseas, upon approval of the family Home Study and supporting documents.
2. When your ABI Application is approved, families seeking child-placement services will receive the business agreement to complete for your chosen placement program. If the Application reveals a concern that will not allow ABI to work with your family for an adoptive placement, you will be notified.
3. When your application has been approved you will receive another paperwork packet. Kentucky, Indiana, Tennessee, and Missouri residents utilizing ABI for Home Study services will receive a Home Study Packet; families in any state pursuing child placement services will receive an Agency Agreement and extra information specific to your program. If you reside outside Kentucky, Indiana, Missouri, or Tennessee ABI must approve the Home Study provider in your state. Most of the time, the home study process our families experience takes about one month, but is directly related to the return of many criminal checks, supporting documents, and family's scheduling flexibility; other agencies may have a different timeline.
4. All families adopting internationally must complete the required Adopting Parent Education training. Please refer to the corresponding Adopting Parent Education section.
5. KY/IN/MO/TN Home Study International Adoption Families: Once your Home Study is completed, you will submit your Immigration application (I-600A or I-800A depending on your country of choice) and supporting documents; ABI will assist with this process as needed. Your home study will be submitted to your child placement agency (if not ABI) for your Dossier.  
KY/IN/MO/TN Domestic Adoption Families: Once your Home Study is completed, you will be ready to prepare and finalize the Family Profile to be shared with expectant parents considering adoption.  
International Adoption Child Placement Families: When your Agency Agreement is received with payment, and an interagency agreement is established with your home study agency, ABI child-placing clients will receive a country specific Dossier Guide, which will have step-by-step instructions for completing your dossier (including specific Home Study instructions). We realize the dossier can be overwhelming! Please know that we will help you with each step and we are available to answer questions and offer professional guidance!
6. All families adopting internationally must be fingerprinted by USCIS.
7. International Adoption Families: When your Home Study and dossier are complete and you have received immigration approval you will be offered a child referral, or we will submit your dossier to the country of your choice and begin the wait for the referral of your child(ren) or the invitation to travel. The time for referral or travel varies depending on country, gender, and age of child requested. Acceptance papers are then prepared and submitted. Once the legal steps are finished, you will be given specific travel instructions about travel to your child's country to complete the adoption. ABI representatives or facilitators will assist our child placement clients while in the foreign country. You will then proceed with the steps required in your state to complete the re-adoption procedures (necessary in most states for your child to obtain a U.S. Birth Certificate or Record of Foreign Birth). The adopted child will need to be declared a citizen by following USCIS instructions. If your child enters the U.S. on an IR-3 Visa they are automatically considered a U.S. citizen.  
KY/IN/MO/TN Domestic Adoption Families: After home study and profile completion, you will wait to be chosen by and matched with an expectant parent. The relationship between birth and adoptive families during the pregnancy is always unique and depends on many factors (most importantly, the preferences for all involved). After birth, the baby may be placed directly with adoptive parents in a foster placement or in temporary care. The rights of biological parents will be terminated and after a supervisory period, the adoptive parents may finalize in court.
8. Although this may all appear confusing, ABI staff will guide you through each step!

# ABI, Inc. Criteria for Agency Acceptance and Application Guidelines

## **Basic Guidelines for Eligibility:**

The following criteria are based on child welfare policy, Kentucky Revised Statutes, agency policy and foreign government requirements:

- Applicants must have an earned income that is at least 125% of the poverty level for the number of family members as mandated by federal guidelines (see following page).
- Applicants must be free of severe emotional or mental health problems and be free of life ending illnesses.
- Applicants must not have any child/spouse abuse convictions and cannot have a currently open case with any Division of Social Services pertaining to accusations of abuse. Applicants should not have had any sexual related convictions. All criminal history will be evaluated on a case by case basis, taking into consideration the time since the incident, the nature of the incident and rehabilitation.
- Applicants should have no more than three divorces between both partners. Additional divorces may be evaluated on a case by case basis and acceptance is possible with a favorable psychological evaluation.
- Applicants should be married a minimum of one year. If single and divorced, Applicants should be divorced for at least one year prior to making application with ABI. Limited exceptions may be made on a case by case basis.
- Single applicants are welcome.
- Applicants desiring to adopt internationally should be at least 25 years of age. Applicants desiring domestic adoption should be at least 21 years of age and no more than 45.
- ABI does not accept unmarried cohabiting couples.
- Applicants cannot be currently using illicit drugs or have used illicit drugs in the recent past. Applicants should not have a recent history of recovery from alcoholism or other addictions.
- Applicants cannot have been convicted of any alcohol or drug related offenses within the last seven years.
- Applicants cannot have been convicted of a felony. (Applicants with felony convictions over 20 years past may be considered on a case by case basis.)
- Applicants may not have any pending criminal charges.
- Applicants must truthfully disclose all requested information on all ABI forms and to their home study worker.
- Clients desiring to adopt from a country that requires travel must be physically capable of travel.
- Infertility diagnosis is not required.
- Applicants must use age appropriate disciplinary measures that do not include any cruelty.

## **Applicants for international adoption must also satisfy the eligibility requirements of the sending country.**

The agency **reserves the right**, at ABI's sole discretion to deny the applications of persons:

- who have any misdemeanor convictions
- who have been accused of abuse or neglect
- who have a significant medical condition
- who are single and age fifty or older, or if both members of a couple are age fifty or older
- who use unhealthy disciplinary plans or actions. Families must use age appropriate disciplinary measures, that do not include striking a child with any object, withholding of food or drink, excessive isolation or other cruel punishments.
- Any other concerns that ABI identifies

## **Medical Care:**

ABI will place children only into homes with parents who agree to seek medical attention when necessary for the child. In addition, parents must agree not to withhold medical treatment for the child against the advice of medical personnel.

This policy extends to vaccinations in that adoptive families must agree to have all children in the home vaccinated in accordance with the current recommendations of the U.S. Centers for Disease Control and Prevention, unless a licensed physician has contraindicated vaccinations for medical reasons.

# ABI, Inc. Criteria for Agency Acceptance and Application Guidelines (Continued)

## **Pregnancy/Birth/Adoption - International Adoption:**

In order to serve the best interests of children and families, All Blessings International has instituted the following policies to ensure that children enter the household with sufficient time between arrivals so as to allow the family to accord each child the care and attention he needs to thrive.

When a family's dossier is placed *on hold*, this means that All Blessings International will communicate to our Foreign Service Provider partners that the family should not be suggested as a referral for a child, nor will the family be allowed to accept the referral of a child during the hold period. Families may continue to work on dossier documents during a hold period, with the understanding that the referral holds described below will apply:

### **If no referral has been made:**

Prospective adoptive families that become pregnant prior to the referral of a child will be required by the agency to place their adoption process on hold for a minimum period of six months. Families must report pregnancies to the agency within 90 days.

If a new child is born, the family will be required by the agency to place their adoption process on hold for a minimum period of six months. Following the six month hold, a complete home study update and assessment of the family with the new child must be submitted to the agency before the adoption case can be reactivated.

If the prospective adoptive family adopts or accepts the referral of another child before the referral of a child from an ABI program, the family will be required by the agency to place their ABI adoption process on hold until the first adopted child has been in the home for a minimum period of six months. Following the six month hold, a complete home study update and assessment of the family with the newly adopted child must be submitted to the agency before the dossier can be reactivated.

### **If a referral has been made:**

The case may either continue or be placed on hold until six months after the arrival of the new child, as stated above, dependent upon:

- Sending country policies
- ABI staff decisions
- Needs and characteristics of the newly arrived child in the family and of the referred child
- Wishes of the adoptive family

Under no circumstances will ABI allow a child to be placed on hold for a family due to the arrival of a new child or pregnancy.

Please note, exceptions to the pregnancy policy may be made on a case by case basis.

### **Applicant Approval:**

After receiving the completed application, it will be reviewed to determine if your family meets the basic requirements for adoption services from All Blessings International, Inc. and the sending country, if one has been selected. If these requirements are met, the family will be permitted to proceed. Approval for the continuation of the Home Study and/or adoption process can only be given after all pertinent information has been received and approved. The above standards only apply to this agency, as various placement agencies and countries may have different requirements. Please contact our offices if this causes confusion.

All Blessings International reserves the right to require additional documentation, references, psychological evaluations, meetings, education, or other certifications prior to approving any family for adoption to ensure that children are placed with safe and loving families.

All clients have the right to refuse any recommended or suggested service. Failure to accept recommended or suggested services could result in the inability to complete an adoption utilizing the services of this agency.

All Blessings International does not and shall not discriminate on the basis of race, color, religion (creed), gender, gender expression, age, national origin (ancestry), disability, marital status, sexual orientation, or military status, in any of its activities or operations. These activities include, but are not limited to, hiring and firing of staff, selection of volunteers and vendors, and provision of services. We are committed to providing an inclusive and welcoming environment for all members of our staff, clients, volunteers, subcontractors, vendors, and clients.





**U.S. Citizenship and Immigration Services**

Search our Site

Español | About USCIS | Contact Us

Need Help? Ask Emma

FORMSNEWSCITIZENSHIPGREEN CARDTOOLSLEGAL RESOURCES

Home > Forms > I-864P, 2020 HHS Poverty Guidelines for Affidavit of Support [Versión en español](#) [Share This Page](#) [Print](#)

## I-864P, 2020 HHS Poverty Guidelines for Affidavit of Support

### Forms

File Online - Create an Account or Sign In

Use the HHS Poverty Guidelines to complete Form I-864, Affidavit of Support Under Section 213A of the INA.

### Most Popular Forms

These poverty guidelines are effective beginning Mar. 1, 2020.

Apply for Citizenship (Form N-400)

**For the 48 Contiguous States, the District of Columbia, Puerto Rico, the U.S. Virgin Islands, Guam, and the Commonwealth of the Northern Mariana Islands:**

Apply for a Green Card (Form I-485)

Petition for Alien Relative (Form I-130)

Apply for Employment Authorization (Form I-765)

Affidavit of Support (Form I-864)

Employment Eligibility Verification (Form I-9)

Apply for a Travel Document (Form I-131)

Remove Conditions on a Green Card through Marriage (Form I-751)

Renew or Replace My Green Card (Form I-90)

G-1055, Fee Schedule

Sponsor's Household Size	100% of HHS Poverty Guidelines*	125% of HHS Poverty Guidelines*
	<i>For sponsors on active duty in the U.S. armed forces who are petitioning for their spouse or child</i>	<i>For all other sponsors</i>
2	\$17,240	\$21,550
3	\$21,720	\$27,150
4	\$26,200	\$32,750
5	\$30,680	\$38,350
6	\$35,160	\$43,950
7	\$39,640	\$49,550
8	\$44,120	\$55,150
	<b>Add \$4,480 for each additional person</b>	<b>Add \$5,600 for</b>

each additional person

Forms Information

**For Alaska:**

Filing Fees

Forms Updates

Department of State (DS) and Other Non-USCIS Forms

Sponsor's Household Size	100% of HHS Poverty Guidelines*	125% of HHS Poverty Guidelines*
	<i>For sponsors on active duty in the U.S. armed forces who are petitioning for their spouse or child</i>	<i>For all other sponsors</i>
2	\$21,550	\$26,937
3	\$27,150	\$33,937
4	\$32,750	\$40,937
5	\$38,350	\$47,937
6	\$43,950	\$54,937
7	\$49,550	\$61,937
8	\$55,150	\$68,937
	<b>Add \$5,600 for each additional person</b>	<b>Add \$7,000 for each additional person</b>

**For Hawaii:**

Sponsor's Household Size	100% of HHS Poverty Guidelines*	125% of HHS Poverty Guidelines*
	<i>For sponsors on active duty in the U.S. armed forces who are petitioning for their spouse or child</i>	<i>For all other sponsors</i>
2	\$19,830	\$24,787
3	\$24,980	\$31,225
4	\$30,130	\$37,662
5	\$35,280	\$44,100
6	\$40,430	\$50,537
7	\$45,580	\$56,975
8	\$50,730	\$63,412

**Add \$5,150 for each additional person**

**Add \$6,437 for each additional person**

[Top](#)

Last Reviewed/Updated: 03/02/2020

Was this page helpful?

Yes  No

Please select a reason

Submit



U.S. Citizenship and Immigration Services



**TOPICS**

- A-Z Index
- Adoption
- Appeals
- Archive
- Avoid Scams
- Citizenship
- Citizenship Resource Center
- Contracts
- Executive Actions on Immigration
- Family
- File Online
- Forms
- Glossary
- Green Card
- History and Genealogy
- Humanitarian

**VERIFICATION**

- E-Verify
- I-9 Central
- myE-Verify
- SAVE

**POLICIES**

- Accessibility
- Accuracy and Translation Disclaimer
- Adobe Reader
- Civil Rights and Liberties
- No FEAR Act
- Plug-Ins
- Privacy and Legal Disclaimers
- Social Media Policy
- USCIS Freedom of Information Act and Privacy Act
- Website Policies

**GOVERNMENT**

- U.S. Department of Homeland Security
- U.S. Customs & Border Protection
- U.S. Immigration & Customs Enforcement
- U.S. Department of State
- Passports
- Visa Bulletin
- White House
- DHS Office of Inspector General
- USA.gov

# Hague Disclosures

As an agency that is Hague Accredited through the Council On Accreditation, we are required to provide certain specific information to clients upon initial contact. In order to maintain compliance with the Intercountry Adoption Act and Hague Regulations we are providing all prospective clients the following information:

**Client Grievance Process** – Found within the Preliminary Information Booklet on page 6. This will again be provided to clients with the Agency Business Agreement and is available on our website. You can also find the link for the U.S. Department of States Hague Complaint Registry listed on page 6.

**Domestic Supervised Providers** – According to the Hague Regulations, we are obligated to disclose to you any domestic (within the US) supervised providers that we use and you will in turn be working with directly or indirectly when adopting from a country that is a part of the Hague Treaty on Intercountry Adoptions. Currently we accept home studies from a number of agencies within the United States. These agencies may be considered by our agency to be either Exempt Providers or Supervised Providers based on the services they are providing and at our discretion. It is impossible to list every agency in the US from whom we would accept a Home Study. We will NOT accept a Home Study from all agencies though, so before committing to a Home Study agency it is important that you discuss this with ABI. Some (but not all) of the things we will be looking at when deciding on whether or not to accept a Home Study are as follows: Is the agency Hague Accredited or pursuing Hague Accreditation? Is the agency licensed and non-profit? What is the agency's general reputation? Is the agency willing to sign an agreement with us attesting to their compliance with Hague standards? Is the agency a member of NCFCA and/or other professional organizations? How many years has the agency been in business? We will also be requiring that any agency we utilize as a Supervised Provider or an Exempt Provider be licensed, non-profit and carry professional liability insurance.

**Foreign Supervised Providers** – According to the Hague regulations we are obligated to disclose to you any foreign supervised providers that we use and that will in turn work with directly or indirectly when adopting from a country that is a part of the Hague Treaty on Intercountry Adoption.

**Sample Contracts** – Families are required to sign a Waiver of Liability and a Business Agreement when starting to work with ABI. At the time of referral acceptance families must sign a Statement of Acceptance and Responsibility. Samples of all of these documents are available online at: [www.allblessings.org](http://www.allblessings.org)

under Internal Programs, under Hague Disclosures. The samples are substantially like the documents you will be required to sign. Hard copies of each of these samples and/or actual copies are available upon request.

**Number of Adoptions** – The following information is available upon request: the number of adoptions completed per year for the past three years, and the number of these placements and percentage that are disrupted or have been dissolved.

**Number of Applicants** – The following information is available upon request: the number of applicants who apply to adopt yearly.

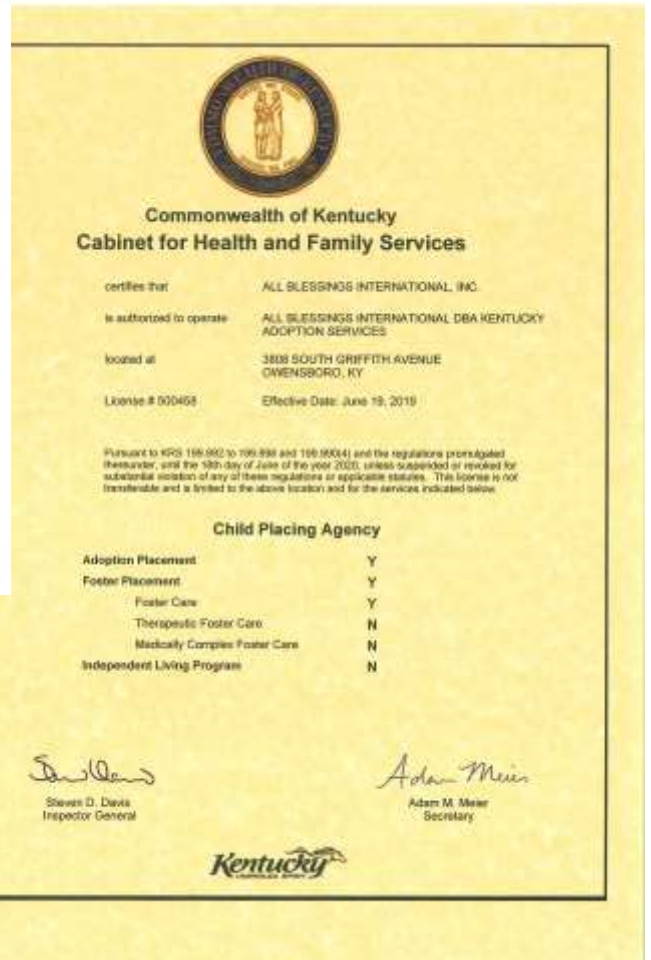
**Number of Children Eligible for Adoption** – It is impossible for ABI to predict the number of children eligible for adoption in either the US or foreign countries. There are various estimates on the number of orphans in the world, many of whom are not necessarily eligible for adoption. There are an unfathomable number of children for whom adoption would present an opportunity for a loving and nurturing family. It is possible to look on the State Department website at: [hsp://travel.state.gov/family/adoption/stats/stats\\_451.html](http://hsp://travel.state.gov/family/adoption/stats/stats_451.html) to explore the number of children issued adoption related immigrant visas to enter the US on a year by year basis. Upon request ABI will disclose the current number of waiting children we are aware of as being eligible for adoption through our agency for each country where we work.

Hague Accredited



CREDIBILITY • INTEGRITY • ACHIEVEMENT

# ABI Licenses and Accreditations



# Humanitarian Aid

Humanitarian Aid projects are an integral aspect of the services and mission of ABI. Considering the fact that the agency was founded in 2002, the amount of humanitarian aid that has been provided through ABI is phenomenal. ABI has supported humanitarian aid in China, Guatemala, El Salvador, Peru, Haiti, Kenya, and The Gambia. We look forward to projects in additional countries.

Following the devastating 2010 Haiti earthquake, ABI staff were on the ground in less than one week assisting with relief efforts, processing paperwork, helping traumatized orphanage staff and children and arranging escorts for children in the adoption process. ABI has significantly contributed to the rebuilding of a destroyed orphanage.

ABI has delivered thousands of pounds of supplies such as medicines, shoes, undergarments, formula, diapers and other necessary items. ABI was able to purchase Christmas gifts for 150 children residing at an orphanage in Guatemala in 2006 and was able to take an Orphanage Administrator on a shopping trip in 2007 to purchase much needed items, including 60 towels, medicines, 300 eating utensils, plates, bowls, bibs, coolers for water, etc.

At the beginning of 2006 ABI began a program in El Salvador aimed at assisting and encouraging permanency planning for institutionalized children. This program successfully sought to reunify children with their biological families if at all possible and in fact, raised money to purchase land to build a home for a child's mother, as lack of housing was the sole reason for the separation. It also sought to establish a re-connection between institutionalized children and their extended families, as research has demonstrated that in Latin America children return to their extended family community when they age out of institutional care. We feel that it is imperative to try to impact the family of origin so that healthier family functioning is possible with the end goal of stopping the cycle of poverty and/or abuse leading to institutionalization of children. This program also seeks to provide vocational training for institutionalized children thereby increasing the likelihood that they will have the means of supporting themselves as they get older, another tool in breaking the cycle of poverty leading to institutionalization. ABI has spent over \$60,000 in El Salvador since the inception of this project, which has become a model for working successfully with institutionalized youth.



ABI has supported numerous aid projects in Haiti. The Haitian people place great value on education. There is no free public school system in the country, and the rate of illiteracy is 45%. ABI supported Foundation Bon Berger with donations for three free schools - one in Port-au-Prince, a second in Jeremie, and a third still in the planning stages. Students were provided with tuition, books, uniforms, shoes, and two meals a day. The schools not only offer the children an education, but they allow impoverished families to stay together.

We purchased land toward the end of 2006 to build a Children's Home in a rural area of the Island nation of Haiti, classified as one of the poorest countries in the world. Although originally envisioned as a children's home, the needs of the community were better served by being utilized as a school. ABI also began a project entitled, "Grandma's House" in early 2007. The first recipient of this project was an elderly widow, known as "Grandma", raising her 9 grandchildren as all her children had also passed away. ABI funded the building of a concrete block home for this family as their home was in shambles and "Grandma" needed a home to keep her from having to institutionalize her grandchildren.



ABI has contributed to several other smaller humanitarian aid efforts and spends a considerable amount of our resources to assist children for whom adoption is not the best alternative and to advocate for older institutionalized children so that their children in the future will not be institutionalized.



# Notes



# ALL BLESSINGS INTERNATIONAL

Finding Families For God's Children

## Licensed in Kentucky, Indiana, Missouri, and Tennessee

### Main Office

3808 S. Griffith Ave. Owensboro, KY 42301  
P: 270-684-2598 • F: 270-684-6748

### Missouri Office

5505 N Farmer Branch Rd, Ozark, MO 65721  
P: 417-485-4488 • F: 417-485-4486

### Indiana Office

3808 S. Griffith Ave. Owensboro, KY 42301  
P: 217-898-1158

### Tennessee Office

1650 Murfreesboro Rd Suite 203, Franklin TN 37067  
P: 615-905-6586